

MT3A

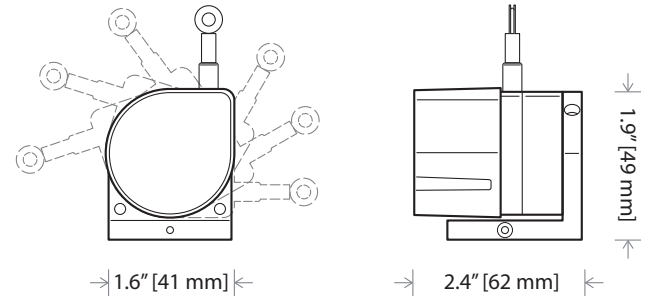
Test Applications • Voltage Divider

Compact String Pot • Flight/Crash Test Applications

Dual Axis 360° Mounting Bracket

3, 9, 15 and 30-inch Stroke Range Options

Wet Environments • Aluminum Enclosure



The MT3A is the solution for high-acceleration test applications in potentially wet environments. Just like the MT2A, the MT3A comes in 4 different full-stroke ranges, has a high-tension heavy-duty measuring cable designed for the demands of flight and automotive crash tests and comes with an easy to use 2-axis 360° rotation mounting bracket for installation in hard to fit areas.

For extreme high impact applications, the MT3A is now available with a rugged all aluminum sensor cover!

GENERAL

| | |
|---------------------------|--|
| Full Stroke Range Options | 0-3, 0-9, 0-15, 0-30 inches, min. |
| Output Signal | voltage divider (potentiometer) |
| Accuracy | ± 1.1% to 0.15% full stroke (see ordering information) |
| Repeatability | ± 0.02% full stroke |
| Resolution | essentially infinite |
| Measuring Cable | Ø.019-in. nylon-coated stainless steel |
| Enclosure Material | anodized aluminum |
| Sensor Cover Options | aluminum or polycarbonate |
| Sensor | conductive plastic-hybrid potentiometer |
| Weight | 0.5 lb. max. |

ELECTRICAL

| | |
|-----------------------------------|--|
| Input Resistance | 10K ohms (± 10%) |
| Power Rating, Watts | 2.0 at 158°F (70° C), derated to 0 @ 255°F (125°C) |
| Recommended Maximum Input Voltage | 30V (AC or DC) |
| Electrical Stroke | 94% ±4% of input voltage |
| Mating Plug | LEMO FGG.OB.304.CLAD52 |

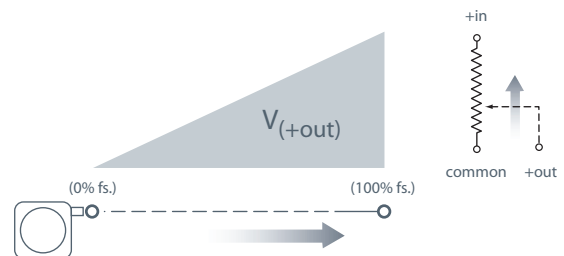
MECHANICAL

| | |
|--------------------------------------|------------------|
| Measuring Cable Tension Options | 9, 14 and 33 oz. |
| Maximum Measuring Cable Acceleration | 90 g |

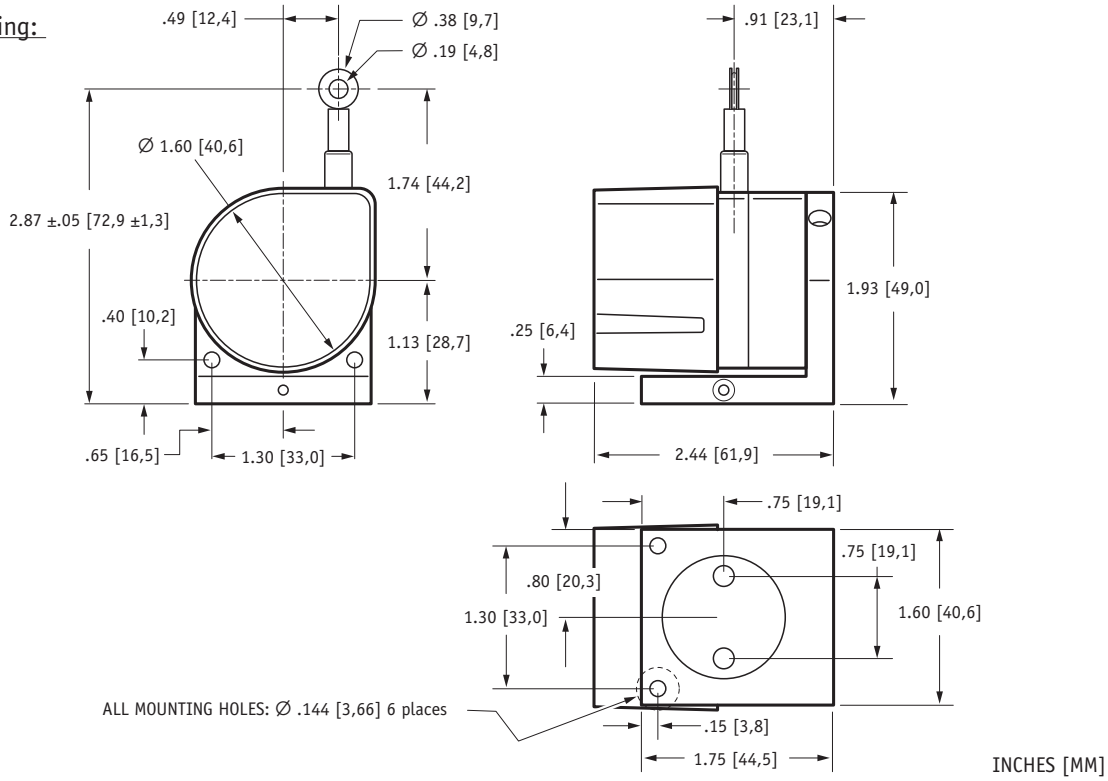
ENVIRONMENTAL

| | |
|-----------------------|--------------------------------|
| Enclosure | NEMA 4 / IP67 |
| Operating Temperature | -40° to 250° F (-40° to 120°C) |

Output Signal



Outline Drawing:



Ordering Information:

Model Number:

MT3A - - - **10K** -

order code: **R** **A** **B** **C**

Sample Model Number:

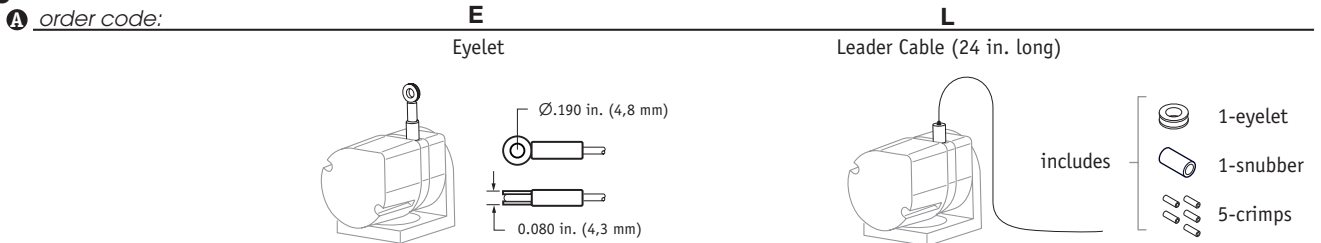
MT3A - 9E - 33 - 10K - C1A

- R** range: 9 inches
- A** measuring cable termination: eyelet
- B** measuring cable tension: 33 oz. (±6 oz.)
- C** electrical connection: 15-ft cable w/end-mounted strain relief/aluminum cover

Full Stroke Range:

| R order code: | 3 | 9 | 15 | 30 |
|------------------------------|-------------------|-------------------|-------------------|-------------------|
| full stroke range, min: | 3 inches | 9 inches | 15 inches | 30 inches |
| potentiometer cycle-life: | 2.5×10^6 | 8.3×10^5 | 5.0×10^5 | 2.5×10^5 |
| accuracy (% of full stroke): | 1.1 % | .25% | .20% | .15% |

Measuring Cable Termination:

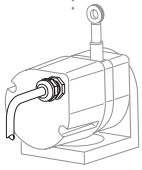
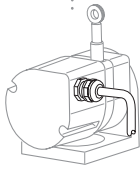
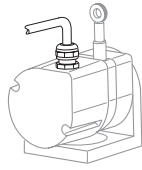
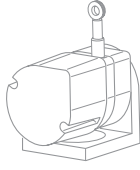
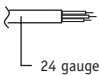


Measuring Cable Tension:

| B order code: | 9 | 14 | 33 |
|--------------------------|------------|-------------|-------------|
| tension: | 9 (±2) oz. | 14 (±4) oz. | 33 (±6) oz. |
| max. cable acceleration: | 17 g | 50 g | 90 g |

Ordering Information (cont.):

Electrical Connection/Sensor Cover:

| Ⓢ order code: | C1 | C1A | C4 | C4A | C2 | C2A | C5 | C5A | | | | | | | |
|--|--|----------|--|----------|---|----------|---------------|----------|--------|-------|------|--|--|--|--|
| sensor cover: | polycarbonate | aluminum | polycarbonate | aluminum | polycarbonate | aluminum | polycarbonate | aluminum | | | | | | | |
| electrical cable length: | 15 ft (4.5 m) | | 30 ft (9 m) | | 15 ft (4.5 m) | | 30 ft (9 m) | | | | | | | | |
| |  <p>end-mount strain relief</p> | | | |  <p>side-mount strain relief</p> | | | | | | | | | | |
| Ⓢ order code: | C3 | C3A | C6 | C6A | BC | BCA | | | | | | | | | |
| sensor cover: | polycarbonate | aluminum | polycarbonate | aluminum | polycarbonate | aluminum | | | | | | | | | |
| electrical cable length: | 15 ft (4.5 m) | | 30 ft (9 m) | | n/a | | n/a | | | | | | | | |
| |  <p>top-mount strain relief</p> | | | |  <p>blank cover*</p> | | | | | | | | | | |
| <p>Signal Connection Color Code</p>  <p>24 gauge, shielded</p> | | | <table border="1"> <thead> <tr> <th>color</th> <th>signal</th> </tr> </thead> <tbody> <tr> <td>Red</td> <td>+in</td> </tr> <tr> <td>Black</td> <td>common</td> </tr> <tr> <td>Green</td> <td>+out</td> </tr> </tbody> </table> | color | signal | Red | +in | Black | common | Green | +out | <p>* blank cover option is for customers who want to provide their own connector or strain relief. This cover comes without electrical wiring access holes so customer can drill to their requirements.</p> | | | |
| color | signal | | | | | | | | | | | | | | |
| Red | +in | | | | | | | | | | | | | | |
| Black | common | | | | | | | | | | | | | | |
| Green | +out | | | | | | | | | | | | | | |

联系方式



深圳市亿为测控电子有限公司
Shenzhen Bill-Well Measurement & Control Electronics Co., Ltd.

广东省深圳市南山区创业路怡海广场东座2407 邮编：518000

电话：+86 755 2641 9890 传真：+86 755 2641 9680

电子邮箱：sales@bill-well.com