



- Dynamic torque measurements
- Test rig and on-road testing
- Telemetry based transmission
- Low-profile - 35 mm axial length
- Power supply to sensor via telemetry
- Remote shunt calibration function

DESCRIPTION

The CD1124T is a telemetry based torque transducer measuring dynamic torque between the gearbox and engine shaft of heavy-duty vehicles. Through the wireless signal transmission and power supply the CD1124T is extremely easy to mount and use, especially while measuring rotating shafts. It is suitable for both dynamometer-based testing and road trials. With its rugged construction and highly integrated micro electronics, the CD1124-3T meets the most demanding circumstances.

With many years of experience as a designer and manufacturer of sensors, Measurement Specialties, Inc. often works with customers to design or customize sensors for specific uses and testing environments.

To meet your needs we also offer complete turnkey systems. The matched components (sensor, power, amplifier and digital display) are formatted, calibrated and ready for immediate use.

FEATURES

- High Accuracy
- Built-in with telemetry system
- High speed rotation
- High temperature range

APPLICATIONS

- On-board equipments
- Test benches and research
- Test and Measurement

STANDARD RANGE

Standard range of the sensor is 20 000 m.N [16 klbf.ft], other ranges can be adapted on request.

CD1124T Contactless Torque Sensor

PERFORMANCE SPECIFICATIONS

Ambient Temperature: 20±1° C (unless otherwise specified)

Parameters	
Operating Temperature Range (OTR)	-20 to 80° C (-4 to 176° F)
Compensated Temperature Range (CTR)	0 to 60° C (32 to 140° F)
Zero Shift in CTR	<0.5% F.S./ 50° C [100° F]
Sensitivity Shift in CTR	<1% of reading / 50° C [100° F]
Range (F.S.)	±20 kNm [±16 klbf.ft]
Rotation speed	25 000 rpm
Over-Range	
Without Damage	1.5 x F.S.
Accuracy	
Combined Non-Linearity & Hysteresis	±1% F.S. (±0.1% telemetry)

Electrical Characteristics

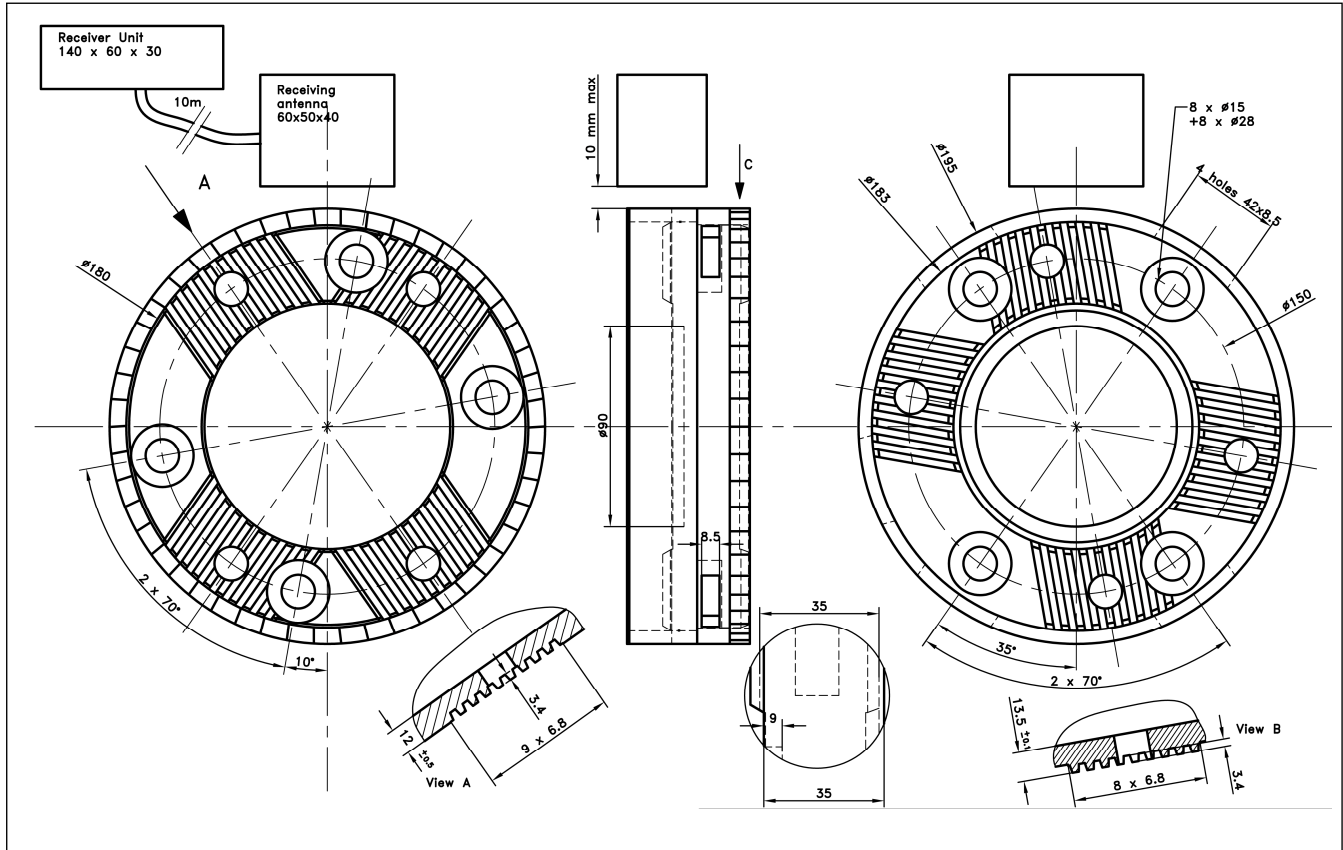
Model	CD1124
Supply Voltage	24Vdc
Signal at F.S	±10V

Notes

1. Protection index: IP 65
2. Material: Body in stainless steel

CD1124T Contactless Torque Sensor

DIMENSIONS & WIRING SCHEMATIC (IN METRIC)



Dimensions in mm

联系方式



深圳市亿为测控电子有限公司
Shenzhen Bill-Well Measurement & Control Electronics Co., Ltd.

广东省深圳市南山区创业路怡海广场东座2407 邮编：518000

电话：+86 755 2641 9890 传真：+86 755 2641 9680

电子邮箱：sales@bill-well.com