

FN4070 Seat Belt Buckle Sensor



- Operating ranges from 0-1kN to 0-50kN
- Crash-testing
- Compatible with most seat belts
- Detachable tongue and cable
- Easy and economical maintenance

Lower operating ranges with model **FN4080**

DESCRIPTION

The **FN4070** load cell measures the effort generated on the anchor point of seat belts during crash tests. It has been specifically designed with a replaceable tongue. The load cell can be easily re-used by changing the tongue. It also has a cable output which can be renewed by the crash test technicians to allow for cost-effective, in-house maintenance of the device.

For lower operating ranges 250N refer to model **FN4080**. Consult your MEAS' representative for technical specification.

With many years of experience as a designer and manufacturer of sensors, Measurement Specialties, Inc., often works with customers to design or customize sensors for specific uses and testing environments. To meet your needs we also offer complete turnkey systems. The matched components (sensor, power, amplifier and digital display) are formatted, calibrated and ready for immediate use.

FEATURES

- Multiple tongues adjustable by customer
- Dynamic application
- Very robust for crash
- Easy cable replacement for customer

APPLICATIONS

- Crash test on-board equipment
- Security absorbers
- Parachute belt and anchor testing

STANDARD RANGES

F.S. Ranges in N	1k	5k	10k	25k	50k
F.S. Ranges in Lbf	200	1k	2k	5k	10k
Materials	Aluminum	Stainless Steel			

FN4070 Seat Belt Buckle Sensor

PERFORMANCE SPECIFICATIONS

All values are typical at temperature 20±1° C

PARAMETERS	
Operating Temperature Range (OTR)	-20 to 80 °C [-4 to 176 °F]
Compensated Temperature Range (CTR)	0 to 60°C [32 to 140°F]
Zero Shift in CTR	<0.5% F.S. /50°C [/100 F°]
Sensitivity Shift in CTR	<1 % of reading /50 °C [/ 100°F]
Range (F.S.)	1 to 50 kN [200 Lbf to 10 kLbf]
Over-Range	
Without Damage	1.5 x F.S.
Without Destruction	3 x F.S.
Accuracy	
Combined Non-Linearity & Hysteresis	<±0.5% F.S

Electrical Characteristics

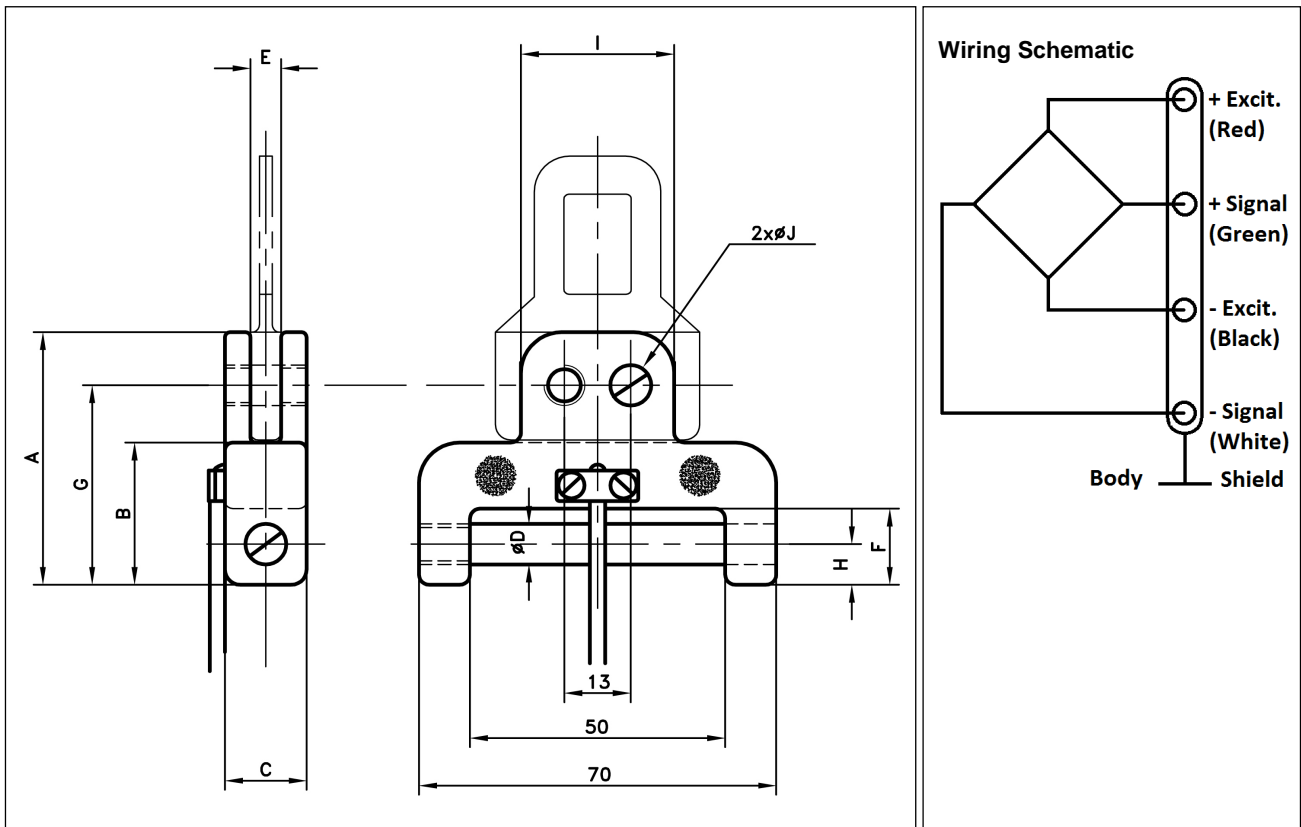
Model	FN4070
Supply Outage	10Vdc
F.S. Output	20mV
Zero Offset	<±1 mV
Insulation under 50Vdc	≥100MΩ

Notes

1. Shielded Φ3 cable with 4 wires (AWG36/28), standard length 2 m [6.5 ft]
2. Material: Body in stainless steel or aluminium alloy depending on F.S.
3. Protection Index IP50 (other levels available on request)
4. CE conformance according to EN 61010-1, EN 50081-1, EN 50082-1

FN4070 Seat Belt Buckle Sensor

DIMENSIONS & WIRING SCHEMATIC (IN METRIC AND IMPERIAL)



Dimensions in mm [inch]

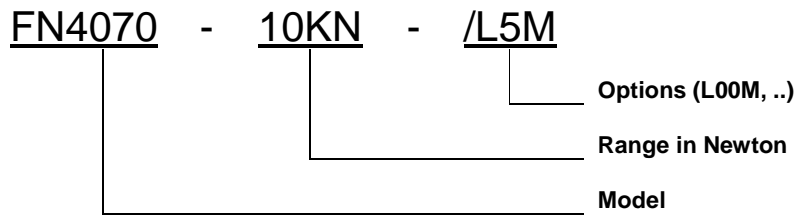
Full Scale Range in N [in Lbf]	1k [200]	5k [1k]	10k [2k]	25k [5k]	50k [10k]
A	36 [1.42]	50 [1.97]	50 [1.97]	61 [2.40]	92 [3.62]
B	24 [0.94]	28 [1.10]	28 [1.10]	37 [1.46]	55 [2.17]
C	12 [0.47]	15 [0.59]	15 [0.59]	19 [0.75]	29 [1.14]
D	6.2 [0.24]	8.2 [0.32]	8.2 [0.32]	12.2 [0.48]	18.5 [0.73]
E	3 [0.12]	6 [0.24]	6 [0.24]	8 [0.31]	12 [0.47]
F	13 [0.51]	15 [0.59]	15 [0.59]	24 [0.94]	37 [1.46]
G	30.5 [1.20]	39.5 [1.56]	39.5 [1.56]	50.5 [1.99]	75.5 [2.97]
H	7 [0.28]	8 [0.31]	8 [0.31]	12 [0.47]	18.5 [0.73]
I	24 [0.94]	30 [1.18]	30 [1.18]	30 [1.18]	40 [1.57]
J	5.2 [0.20]	8.2 [0.32]	8.2 [0.32]	8.2 [0.32]	12.2 [0.48]

FN4070 Seat Belt Buckle Sensor

OPTIONS

L00M: Additional cable length option, replace "00" with total length in meters

ORDERING INFO



联系方式



深圳市亿为测控电子有限公司
Shenzhen Bill-Well Measurement & Control Electronics Co., Ltd.

广东省深圳市南山区创业路怡海广场东座2407 邮编：518000

电话：+86 755 2641 9890 传真：+86 755 2641 9680

电子邮箱：sales@bill-well.com