

# FN3280 Low Range Load Cell with Mechanical Stops



- Very low range: 1 to 5 N (0.2 to 1 lbf)
- S-Beam with mechanical stops
- Very high resolution
- High accuracy
- Compact size

## DESCRIPTION

The **FN3280** S-beam load cell is designed to measure low force and has standard ranges of 1 to 5 N [0.2 to 1 lbf]. Integrated mechanical stops protect against accidental overloads up to 100 times F.S. The **FN3280** provides a combination of economy and performance, this low cost load cell has an accuracy of 0.1% F.S.

For higher ranges, the model **FN3148** can measurement loads from 10 N to 2 kN [2 to 400 lbf] with mechanical stops.

With many years of experience as a designer and manufacturer of sensors, Measurement Specialties, Inc. often works with customers to design or customize sensors for specific uses and testing environments. To meet your needs we also offer complete turnkey systems. The matched components (sensor, power, amplifier and digital display) are formatted, calibrated and ready for immediate use.

## FEATURES

- Combined non-linearity & hysteresis 0.1% F.S.
- Tension and Compression
- Integrated Mechanical Stops
- Full Wheatstone bridge
- Cable output

## APPLICATIONS

- Process control equipment
- Medical Instruments
- Weighing
- Laboratory and Research
- Calibration test benches

## STANDARD RANGES

Ranges in N	1	2	5
Ranges in lbf	0.2	0.4	1
Stiffness in N/m	$2.5 \times 10^3$	$2.75 \times 10^3$	$1.25 \times 10^4$
Stiffness in lbf/ft	$1.7 \times 10^2$	$1.9 \times 10^2$	$8.6 \times 10^2$

# FN3280 Low Range Load Cell with Mechanical Stops

## PERFORMANCE SPECIFICATIONS

All values are typical at temperature  $20\pm 1^{\circ}\text{C}$

Parameters	
Operating Temperature Range (OTR)	-20 to 80° C [-4 to 176° F]
Compensated Temperature Range (CTR)	0 to 60° C [32 to 140° F]
Zero Shift in CTR	<0.5% F.S. / 50° C [/100° F]
Sensitivity Shift in CTR	<0.5 % of reading / 50° C [/100° F]
Range (F.S.)	0-1 to 0-5 N [0.2 to 1 lbf]
Over-Range	
Without Damage	40 to 100 x F.S. (see table)
Accuracy	
Combined non Linearity & Hysteresis	$\pm 0.1\%$ F.S.

### Electrical Characteristics

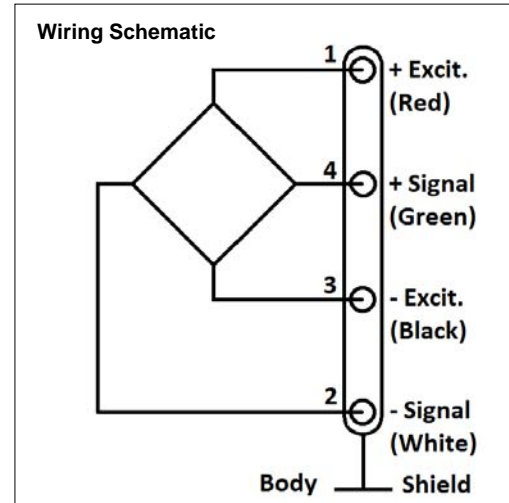
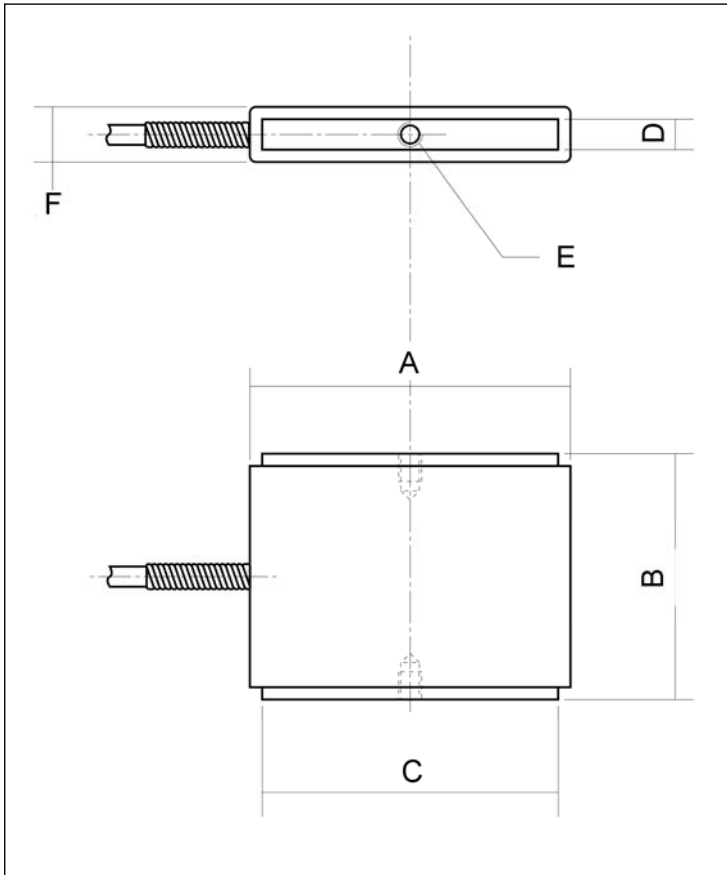
Model	FN3280
Supply Voltage	10Vdc
F.S. Output	$\pm 1.5\text{mV/V}$
Zero Offset	$\pm 5\%$ F.S.
Input Impedance/Consumption	300 to 400 $\Omega$
Output Impedance	300 to 400 $\Omega$
Insulation under 50Vdc	$\geq 100\text{M}\Omega$

### Notes

1. Electrical Termination: Shielded  $\varnothing 2.2$  mm cable, 4 wires (AWG32) standard length 2 m
2. Materials: Body and cover in aluminum alloy
3. CE conformance according to EN 61010-1, EN 50081-1, EN 50082-1

# FN3280 Low Range Load Cell with Mechanical Stops

## DIMENSIONS & WIRING SCHEMATIC (IN METRIC AND IMPERIAL)



Dimensions in mm [inch]

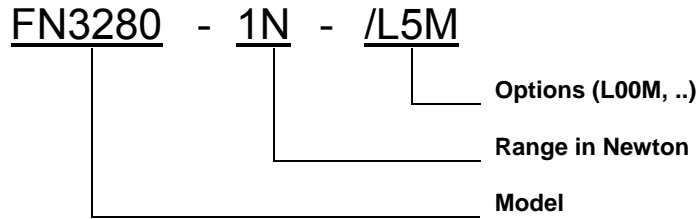
Range in N [in lbf]	1 [0.2]	2 [0.4]	5 [1]
A	48 [1.89]		48 [1.89]
B	40 [1.57]		50 [1.57]
C	48 [1.89]		48 [1.89]
D	5 [0.20]		15 [0.59]
E (Thread)	M3 depth 6 [0.24]		M4 depth 6 [0.24]
F	9 [0.35]		19 [0.75]
Over-range in N [in lbf]	100 [20]		200 [40]

# FN3280 Low Range Load Cell with Mechanical Stops

## OPTIONS

**L00M** : special cable length, replace "00" with total length in meters

## ORDERING INFO



## 联系方式



深圳市亿为测控电子有限公司  
Shenzhen Bill-Well Measurement & Control Electronics Co., Ltd.

广东省深圳市南山区创业路怡海广场东座2407 邮编：518000

电话：+86 755 2641 9890 传真：+86 755 2641 9680

电子邮箱：sales@bill-well.com