

EPRB-3 Pressure Transducer



- Pressure transducer with platinum RTD
- Miniature design (body \varnothing 12 mm)
- Any liquid or gas media compatible with stainless steel
- Operating temperature up to 150 °C (300 °F)
- Rugged for severe environment
- CE approved

DESCRIPTION

Ultra miniature pressure transducer with platinum RTD to sense media temperature, 100% stainless steel welded construction with amplified output, designed for severe environment where minimum size and weight are required.

FEATURES

- Pressure + temperature measurement
- Liquid and gas media compatible with SS
- Pressure port M8x1 or 5/16-24 UNF
- Operating temperature up to 150° C (300° F)

APPLICATIONS

- Motorsports
- Downhole Exploration
- Hydraulic Pressures
- Transportation

STANDARD RANGES

Pressure ranges		Pressure Reference abs. (type3)	Pressure Overload (rated pressure)	Burst Pressure (rated pressure)
(BAR)	(PSI)			
3.5	50	•	2 x FS	3 x FS
6	100	•	2 x FS	3 x FS
10	150	•	2 x FS	3 x FS
20	300	•	2 x FS	3 x FS
35	500	•	2 x FS	3 x FS
60	1K	•	2 x FS	3 x FS
100	1.5K	•	2 x FS	3 x FS
200	3K	•	2 x FS	3 x FS
350	5K	•	2 x FS	3 x FS
700	10K	•	1.5 x FS	2 x FS

EPRB-3 Pressure Transducer

PERFORMANCE SPECIFICATIONS

All values are typical at 20±1 ° C

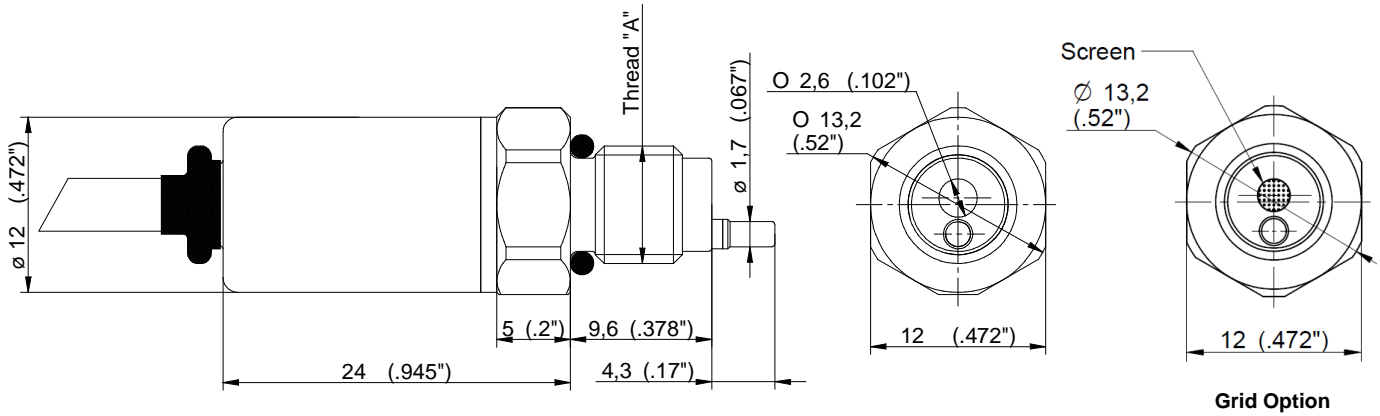
PARAMETERS	VALUES	NOTES
Supply Voltage	Version U: 8 to 32Vdc ; Version R: 5 Vdc reg.	
Max Current	< 8 mA	
Non-Repeatability	±0.05% FSO typ.	
CNL & H	± 0.25% FSO	
Long term stability	Offset = 0.1%span/year ; Span = 0.1%/year	
Bandwidth (-3 dB)	400 Hz	
Thermal Zero Shift "TZS"	± 1%FSO /100° C (±2% FSO/100°C for ranges ≤ 10 bar or 150 psi)	
Thermal Sensitivity Shift "TSS"	± 1% /100° C (±1.5%/100°C for ranges ≤ 10 bar or 150 psi)	
Operating Temperature	-40° C to 150° C	
Compensated Temperature	0° C to 100° C	See option table for other Temperature
Output "FSO"	0.5 to 4.5V = 4V ± 50mV	
Zero Offset at 23°C	0.5V ± 50mV (0.5V ±100mV for ranges ≤ 10 bar or 150 psi)	
Vibration	2g (10Hz to 60Hz) and 20g (60Hz to 1 KHz)	
Shock (1/2 sine)	50g (11 ms) and 200g (6 ms)	
Weight (without cable)	15 g + 23 g per meter of cable	
Temperature sensor RTD	1000 ohms Platinum DIN EN 60751	63% response time : 3 seconds max.
Ingress Protection	IP66	

CE compliance

EN55022 Emissions Class A & B
IEC61000-4-2 Electrostatic Discharge Immunity (1kV contact)
IEC61000-4-3 EM Field Immunity (3V/m)
IEC61000-4-4 Electrical Fast Transient Immunity (1kV)

EPRB-3 Pressure Transducer

DIMENSIONS



PHYSICAL (SEE BLOCK DIAGRAM)

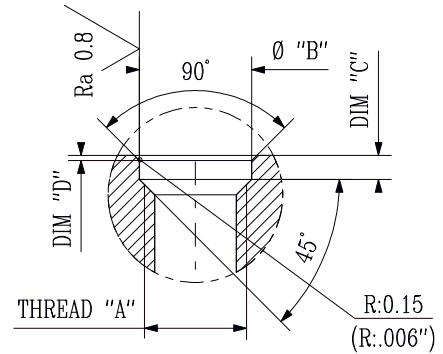
MODEL	THREAD "A"	O-RING SUPPLIED	INSTALLATION TORQUE (MAX.)
S	M8X1	Ø6.35x1.6 VITON	2.5 Nm (5 Nm max.)
Q	5/16-24 UNF-2A	Ø6.35x1.6 VITON	2.5 Nm (5 Nm max.)

INSTALLATION & CONNECTION

RECOMMENDED MOUNTED PORT

Thread "A"	Dim. "B"	Dim. "C"	Dim. "D"
M8x1	8.8 mm	1.9 mm	0.4 mm
5/16-24 UNF-2A	0.35"	0.075"	0.015"

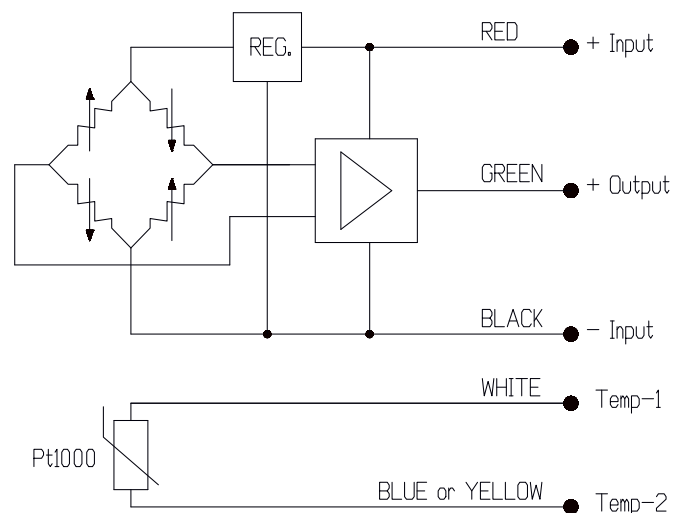
Tolerances on dimensions = ± 0.05 mm (0.002")



WIRING:

Standard: 1 meter of unshielded cable 5 x AWG26

Option **SC00M**: shielded cable 5 x AWG24
(Replace "00" with total length in meter)



EPRB-3 Pressure Transducer

OPTIONS & ACCESSORIES

OPTIONS	CODES	DESCRIPTIONS
Compensated Temperature Ranges	Z1	-20° C to 40° C
	Z35	+20° C to 120° C
Shielded cable	SC00M	Replace "00" with total length in meters (SC1M ; SC3M ; SC5M...)
Grid	GR	Screen version (see dimension page 2)
Acceptance Test Report	ATR	ATR for a complete Acceptance Test Report provided with transducer

ORDERING INFORMATION

Model	-	Pressure Port	Supply Voltage	Output Signal	Pres. Ref.	-	Range/Unit	-	Options
EPRB-3	-	S = M8x1 Q = 5/16-24 UNF	U = 8 to 32 VDC R = 5 VDC reg.	3 = 0.5 to 4.5 V	3 = Absolute	-	3.5B 6B 10B 20B 35B 60B 100B 200B 350B 700B	50P 100P 150P 300P 500P 1KP 1.5KP 3KP 5KP 10KP	- /Z1 /Z35 /SC00M /GR /ATR

Example : **EPRB-3-QU33-500P-/Z1/SC3M**

The **psi** range models are only supplied with imperial thread design.

The **bar** range models are only supplied with metric thread design.

联系方式



深圳市亿为测控电子有限公司
Shenzhen Bill-Well Measurement & Control Electronics Co., Ltd.

广东省深圳市南山区创业路怡海广场东座2407 邮编：518000

电话：+86 755 2641 9890 传真：+86 755 2641 9680

电子邮箱：sales@bill-well.com

www.bill-well.com

4/4

深圳市亿为测控电子有限公司