



MM40 Digital Sensor Readout

- 4 ½ Digit Meter & Power Supply
- Fixed or Unregulated Excitation
- Front Panel Programmable
- 5V or 10V Sensor Supply



The lightweight MM40 Digital Sensor Readout features large 4 ½ digit LED display with full range from 19999 to 99999. The easy to use pushbutton zero adjustment and range configuration minimizes end-user setup time. Operating from 85 to 250VAC 50/60 Hz, the rugged NEMA 4X/IP165, IP20 touch safe case helps ensure trouble-free operation in a wide range of laboratory and industrial environments. All connectors are screw terminals.

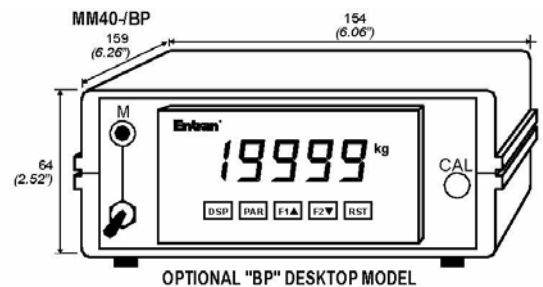
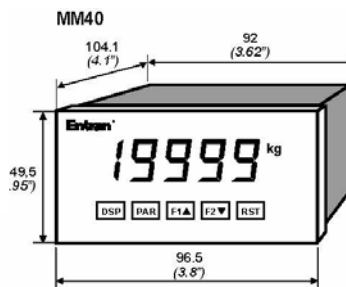
FEATURES

- Modular construction
- 1/8 DIN case
- IP20 touch safe
- Compact size
- Rugged construction
- Attractive packaging
- Includes panel gasket and mounting brackets

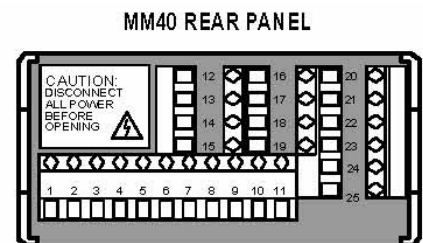
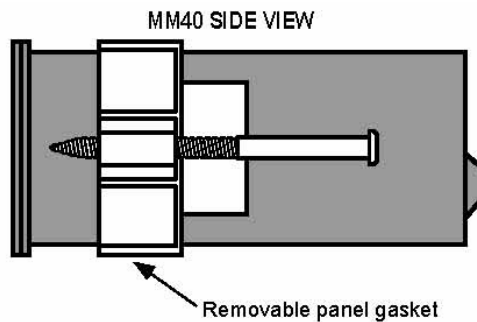
APPLICATIONS

- Instrumentation Labs
- Test Stands
- Process Monitoring
- Rack Mounts

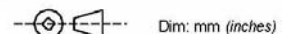
dimensions



wiring



(Order sensors with 5V or 10V excitation.)





MM40 Digital Sensor Readout

Supply for Sensors, General Characteristics

SENSOR SUPPLY VOLTAGES ($\pm 2\%$):	5 VDC @ 65 mA max., 10 VDC @ 125 mA max., jumper selectable. (If standard sensor excitation is not 5V or 10V, order sensor with excitation voltage option V5 or V10.)
OPERATING TEMPERATURE:	0°C to 45°C (32°F to 113°F)
TEMPERATURE SHIFT:	20 ppm/°C max
POWER:	85 to 250 VAC. 50/60 Hz. 15 VA
CONNECTIONS:	Screw terminal
CASE:	1/8 DIN (DIN 43700) Polycarbonate, NEMA 4X/IP65 Indoor use. IP20 Touch safe. Panel gasket and mounting brackets included.
WEIGHT:	295g (10.4 oz.)
FACEPLATE UNITS (Blank if not specified):	B = "bar" K = "kgs" L = "lbs" N = "N" for Newtons P = "psi" = " "
CE CONFORMANCE	EN 61010-1, EN 50082-2, EN 50081-2

Meter Display

DISPLAY:	4 ^{1/2} DIGITS, 0.56" (14.2 mm) red LED
FULL RANGE:	-19999 to 99999
INPUTS FULL RANGE:	± 24 mV or ± 240 mV by internal selection
ACCURACY:	$\pm 0.04\%$ of range ± 1 digit
RANGE ADJUSTMENT:	2 data-point pairs must be programmed
ZERO ADJUSTMENT:	Pushbutton Tare Zero, up to 100% full range
DECIMAL POINT:	0 to 0.0000, front panel programmable
ANALOG OUTPUT:	0-10 VDC, 10 K Ω load min.

Options and Accessories

OUTPUTS AND REPLAYS:	AI = Analog output in Current: 0-20 mA or 4-20 mA: 500 Ω load max., internal selection
	RS232 = RS232 communication port: Data: 7/8 bits Baud: 300 to 19200 Parity: no, odd or even Bus Address: Selectable 0 to 99, Max
	HL = Setpoint Alarm: Two Form C Relays, 5A at 120/240VAC for one relay energized. Total current with both relays energized not to exceed 5A.
OPTIONAL CASE:	BP = MM40 mounted in Desktop Case with On/Off switch and calibration feature (80% FSO when ordered with Measurement Specialties sensors). The "BP" Desktop Case is not compatible

Model number construction

Series	Sensor Supply	Faceplate	Options
MM40	5 = 5VDC 10 = 10VDC	B K L N	AI HL RS232 BP (cannot be ordered with HL or RS232)

Example: MM40-5B – Model MM40, 5VDC Sensor Supply, "Bar" Faceplate Units

联系方式



深圳市亿为测控电子有限公司
Shenzhen Bill-Well Measurement & Control Electronics Co., Ltd.

广东省深圳市南山区创业路怡海广场东座2407 邮编：518000
电话：+86 755 2641 9890 传真：+86 755 2641 9680
电子邮箱：sales@bill-well.com

www.bill-well.com

深圳市亿为测控电子有限公司