

Model 8021-01 & 8022-01 Accelerometer

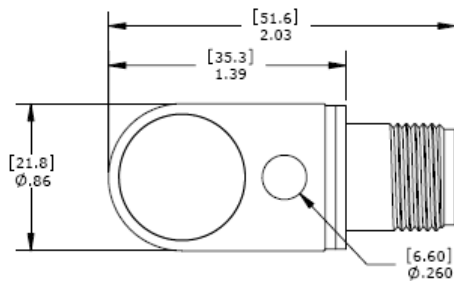


EMI Shielded Industrial Accelerometer
 12kHz Bandwidth
 -55°C to +125°C Operating Range
 Side Exit Connector or Integral Cable



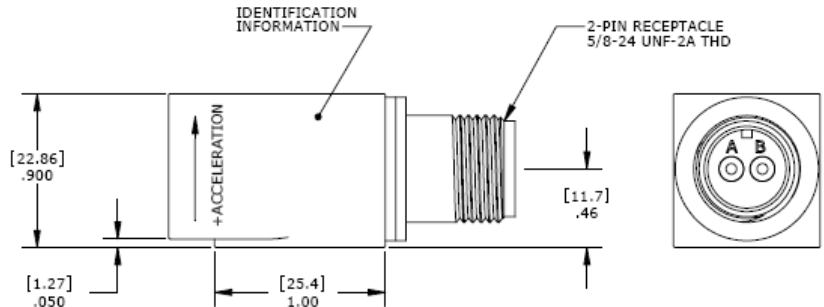
The Model 8021-01 & 8022-01 are internally shielded rugged IEPE accelerometers designed for harsh environments. The accelerometers are available in $\pm 10g$, $\pm 80g$ & $\pm 500g$ dynamic ranges and have a flat bandwidth up to greater than 12kHz. The model 8021-01 features a side exit MIL-C-5015 connector while the model 8022-01 features an integral cable. The units are hermetically sealed and are designed to operating in temperature ranges from -55°C to +125°C.

dimensions



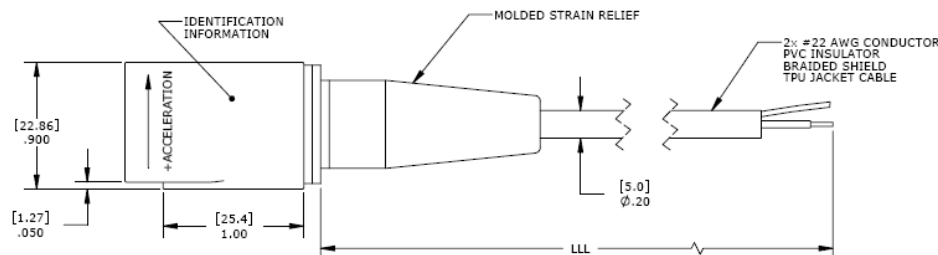
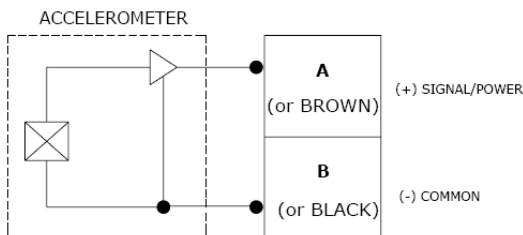
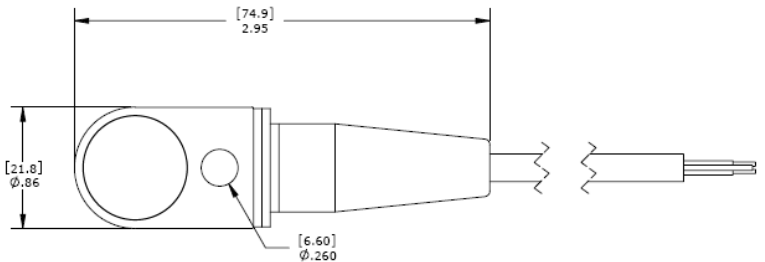
FEATURES

- $\pm 10g$, $\pm 80g$ & $\pm 500g$ Dynamic Ranges
- Wide bandwidth up to 12kHz
- Case Isolated, Internally Shielded
- Hermetically Sealed, Welded
- Annular Shear Mode
- Reverse Wiring Protection
- Stable Temperature Response



APPLICATIONS

- General Purpose
- Machine Monitoring
- Industrial Applications
- Harsh Environments
- Gearbox Monitoring



Model 8021-01 & 8022-01 Accelerometer

performance specifications

All values are typical at +24°C, 100Hz and 4mA excitation unless otherwise stated. Measurement Specialties reserves the right to update and change these specifications without notice. Standard product parameters are described in PSC-1003 for Plug & Play AC Accelerometers.

Parameters

DYNAMIC

	±10	±80	±500	Notes
Range (g)	±10	±80	±500	
Sensitivity (mV/g)	500	100	10	±10%
Frequency Response (Hz)	1-4000	1-8000	1-10000	±10%
Frequency Response (Hz) ²	0.5-6000	0.5-12000	0.5-15000	±3dB
Natural Frequency (Hz)	28000	32000	42000	
Non-Linearity (%FSO)	±1	±1	±1	
Transverse Sensitivity (%)	<5	<5	<5	
Shock Limit (g)	5000	5000	5000	

ELECTRICAL

Compliance Voltage (Vdc)	18 to 30	18 to 30	18 to 30	See Note 1
Excitation Current (mA)	2 to 10	2 to 10	2 to 10	
Bias Voltage (Vdc)	8 to 12	8 to 12	8 to 12	Room Temperature
Output Impedance (Ω)	<100	<100	<100	
Insulation Resistance (MΩ)	>100	>100	>100	@ 100Vdc
Residual Noise (g RMS)	0.00005	0.0001	0.0003	
Warm-up Time (sec)	<1	<1	<1	
Grounding	Case Isolated, Internally Shielded			

ENVIRONMENTAL

Temperature Response (%)	±5
Operating Temperature (°C)	-55 to +125
Storage Temperature (°C)	-55 to +125

PHYSICAL

Sensing Element	Ceramic (shear mode)
Case Material	Stainless Steel
Weight (grams)	105
Mounting Torque	24 lb-in (2.7 N-m)

¹ For full dynamic range a minimum compliance voltage of 24Vdc is recommended

² LF option offers a low frequency response to 0.1Hz.

³ Contact factory for Hazardous Area Approval options

Calibration supplied:	CS-FREQ-0100	NIST Traceable Amplitude Calibration from 20Hz to ±10% Frequency Response Limit
Supplied accessories:	AC-A03735	¼-28 captive mounting screw
Optional accessories:	316A-XXX	Cable Assembly, Straight (XXX designates length in inches, 10ft standard)
	318A-XXX	Cable Assembly, 90 Degrees (XXX designates length in inches, 10ft standard)

ordering info

PART NUMBERING Model Number+Range

802XLF-01-GGG-CCC

| | | | ___ Cable length (120 is 120 inches)

| | | | ___ Range (080 is 80g)

| | _____ Low frequency option, otherwise leave blank

| _____ Electrical Connection Option (1 for 2-pin connector, 2 for integral cable)

Example: 8021-01-080-120

Model 8021-01, 2-pin connector, 80g range, 10ft (120inch) cable length

联系方式



深圳市亿为测控电子有限公司
Shenzhen Bill-Well Measurement & Control Electronics Co., Ltd.

广东省深圳市南山区创业路怡海广场东座2407 邮编：518000

电话：+86 755 2641 9890 传真：+86 755 2641 9680

电子邮箱：sales@bill-well.com