

Model 7502A Accelerometer



+260°C Charge Output Accelerometer
1.8pC/g output, 14kHz Bandwidth
Hermetically Sealed
Miniature, Lightweight (0.8gm)



The **Model 7502A** is a miniature piezoelectric charge mode accelerometer designed for high frequency vibration and shock measurements. The accelerometer incorporates an annular shear mode crystal that provides stable thermal response up to +260°C. The model 7502A is hermetically sealed and features a nominal charge output of 1.8pC/g. The miniature and light weight Titanium package renders the accelerometer ideal for applications requiring minimal mass loading.

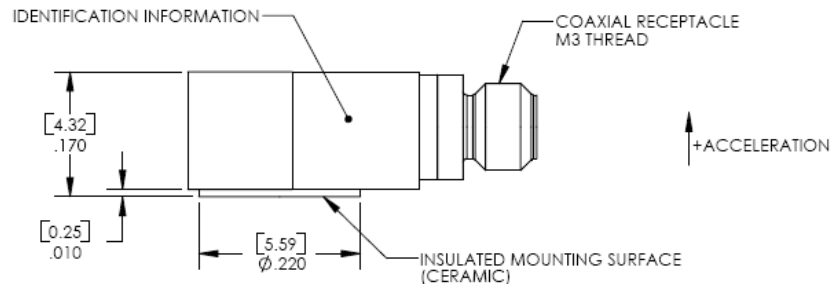
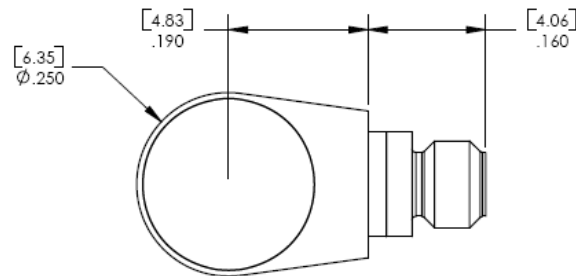
FEATURES

- ±5000g Dynamic Range
- Wide bandwidth up to 14kHz
- -73°C to +260°C Operating Range
- Adhesive Mount
- Titanium Housing
- Annular Shear Mode
- Isolated Mounting Surface

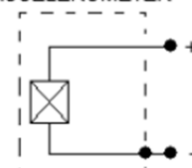
APPLICATIONS

- Vibration & Shock Monitoring
- High Temp Applications
- Flight Testing
- High Frequency Applications
- Small Structures Monitoring

dimensions



ACCELEROMETER



Model 7502A Accelerometer

performance specifications

All values are typical at +24°C, 100Hz unless otherwise stated. Measurement Specialties reserves the right to update and change these specifications without notice. Standard product parameters are described in PSC-1003 for Plug & Play AC Accelerometers.

Parameters

DYNAMIC

		Notes
Sensitivity (pC/g)	1.8	Typical
Sensitivity (pC/g)	1.0	Minimum
Frequency Response (Hz) ²	1-10000	±10%
Frequency Response (Hz) ²	0.1-14000	±2dB
Natural Frequency (Hz)	48000	
Non-Linearity (%FSO)	±1/1000g	
Transverse Sensitivity (%)	<5	
Dynamic Range (g) ¹	±5000	
Shock Limit (g)	10000	

ELECTRICAL

Capacitance (pF)	240	Nominal
Insulation Resistance (MΩ)	>100	@100Vdc
Ground Isolation	Isolated from Mounting Surface	

ENVIRONMENTAL

Temperature Response (%)	See Typical Temperature Response Curve
Operating Temperature (°C)	-73 to +260
Storage Temperature (°C)	-73 to +260
Humidity	Hermetically Sealed

PHYSICAL

Sensing Element	Ceramic (shear mode)
Case Material	Titanium
Electrical Connector	M3 Coaxial Receptacle
Weight (grams)	0.8
Mounting	Adhesive

¹ Operating range over which the accelerometer meets the linearity specifications

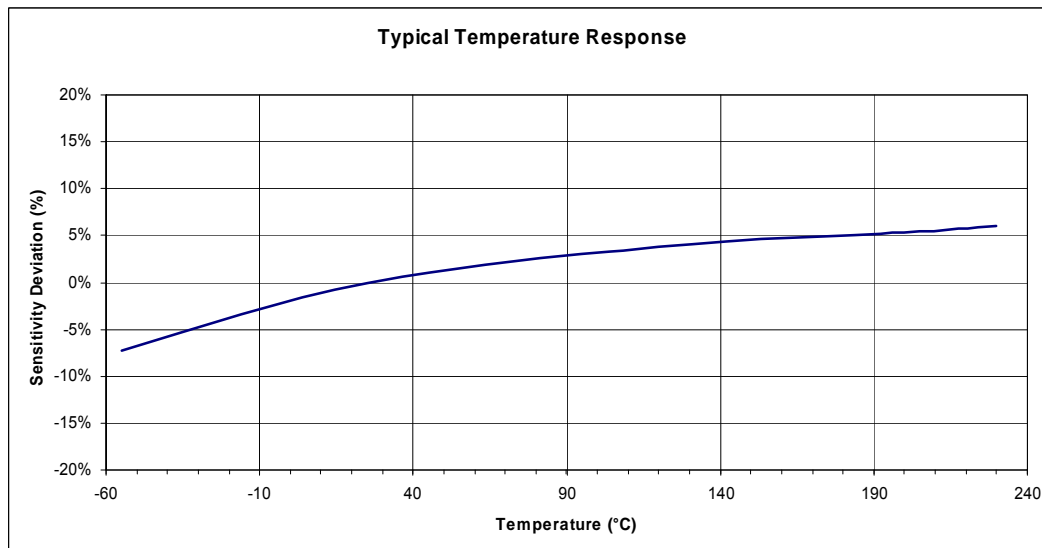
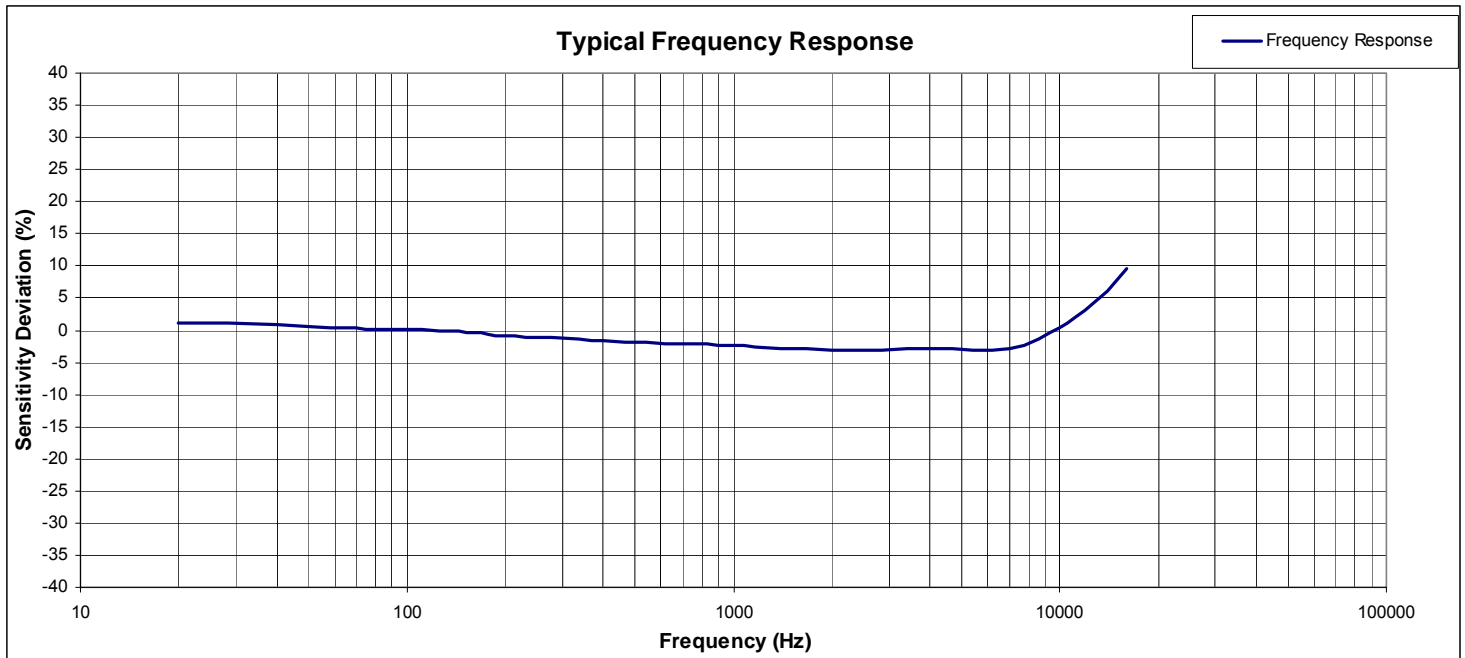
² Low-end response of the accelerometer is a function of its associated electronics.

Calibration supplied: CS-FREQ-0100 NIST Traceable Amplitude Calibration from 20Hz to ±2dB Frequency Response Limit

Optional accessories: 321-XXX Low Noise Cable Assembly, M3 to 10-32 (XXX designates length in inches, 10ft standard)
130 In-Line Charge Converter
161 4-Channel PE & IEPE Signal Conditioner

Model 7502A Accelerometer

performance specifications



ordering info

PART NUMBERING Model Number

7502A

联系方式



深圳市亿为测控电子有限公司
Shenzhen Bill-Well Measurement & Control Electronics Co., Ltd.

广东省深圳市南山区创业路怡海广场东座2407 邮编：518000

电话：+86 755 2641 9890 传真：+86 755 2641 9680

电子邮箱：sales@bill-well.com

www.bill-well.com

深圳市亿为测控电子有限公司