

## Configuration, POR and Power Consumption

### DESCRIPTION

The MEAS series of digital sensors use the latest CMOS sensor conditioning circuitry (SCC) to create a low cost, high performance digital output pressure (14-bit) and temperature (11-bit) sensor designed to meet the strictest requirements from OEM customers.

The MS45x5DO, 86BSD and 85BSD are the latest offering from MEAS to offer digital communication to pressure sensor OEMs. This application note will focus on the following aspects:

1. Configuration Description
  - 1.1. Standard Configuration
    - 1.1.1. Data Fetch Commands
    - 1.1.2. Polling Strategies
  - 1.2. Low Power Configuration
    - 1.2.1. Read\_MR
    - 1.2.2. Write\_MR
2. Power On Reset (POR) Details
3. Power Consumption, -L option

#### Reference Documentation

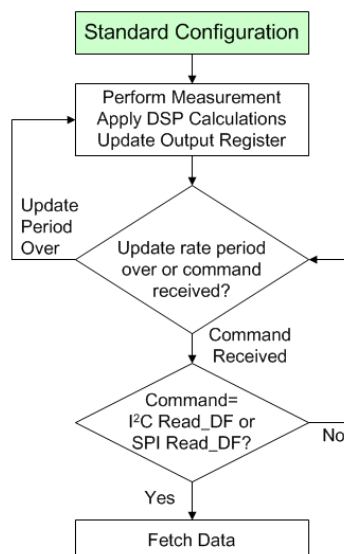
*Interfacing to MEAS Digital Pressure Modules*  
*MS4515DO/MS4525DO Datasheets*  
*86BSD, 85BSD Datasheets*

### CONFIGURATION DESCRIPTION

#### Standard Configuration

In Standard Configuration, the SCC will apply power continuously to the sensor element while the digital core performs A2D measurements, correction calculations and then updates the I<sup>2</sup>C/SPI output register (Figure 1). In this mode, data is continuously updated at a fixed rate without powering down. The master can then fetch the data in I<sup>2</sup>C or SPI with a Read\_DF command. Valid data output to the digital register occurs after the measurement and the DSP calculations are complete.

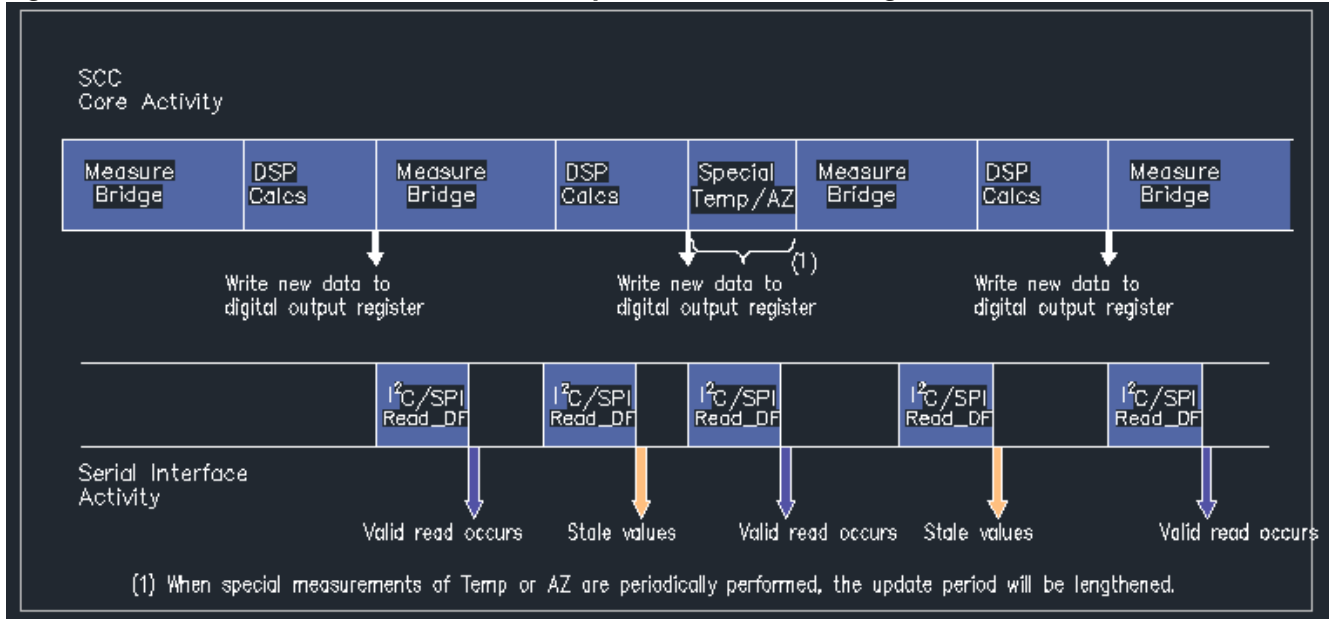
**Figure 1. Flow Diagram of Standard Configuration**



## Configuration, POR and Power Consumption

As shown in Figure 2, after a valid output has been read by the master, the status bits are set to “stale,” indicating that the measurement has not been updated since the last Read\_DF. This “polling mode” allows the application to simply read the digital output at any time and be assured the data is no older than the update period. The chip should be polled at a frequency slower than 20% more than the update time ( $0.5 \times 1.2 = 0.6\text{mS}$  or  $1.666\text{kHz}$ ).

**Figure 2. Measurement & Read Data Fetch Sequence, Standard Configuration**



Using “interrupt polling”, the INT/SS pin will assume the INT (interrupt) function. Instead of polling until a “valid” response is received, the application can look for a rise on the INT pin. This will indicate that the measurement and calculations are complete and new valid data is ready to be read on the I<sup>2</sup>C interface. Interrupt polling works the same with both standard and low power configurations; however it cannot be used with the SPI protocol.

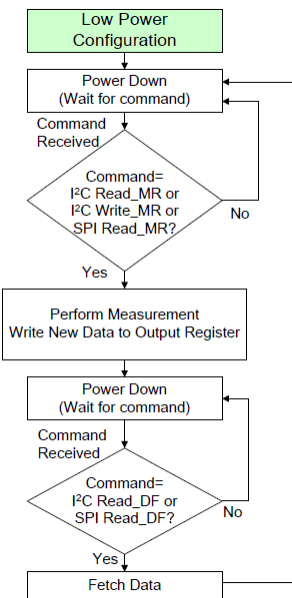
In Figure 2, take note that the interval for valid data on the output bus varies with the Temperature Auto Zero measurement that take place every 255 measurement cycles. Secondly, the SCC clock frequency can vary up to  $\pm 15\%$  adding more variability. These two factor make using “interrupt polling” a more efficient method for obtaining valid data.

### Low Power Configuration

In a Low Power Configuration, after the power-on sequence, the SCC will power down until the master sends a Read\_MR (either I<sup>2</sup>C or SPI) or a Write\_MR (I<sup>2</sup>C only) which wakes the SCC and starts a measurement cycle.

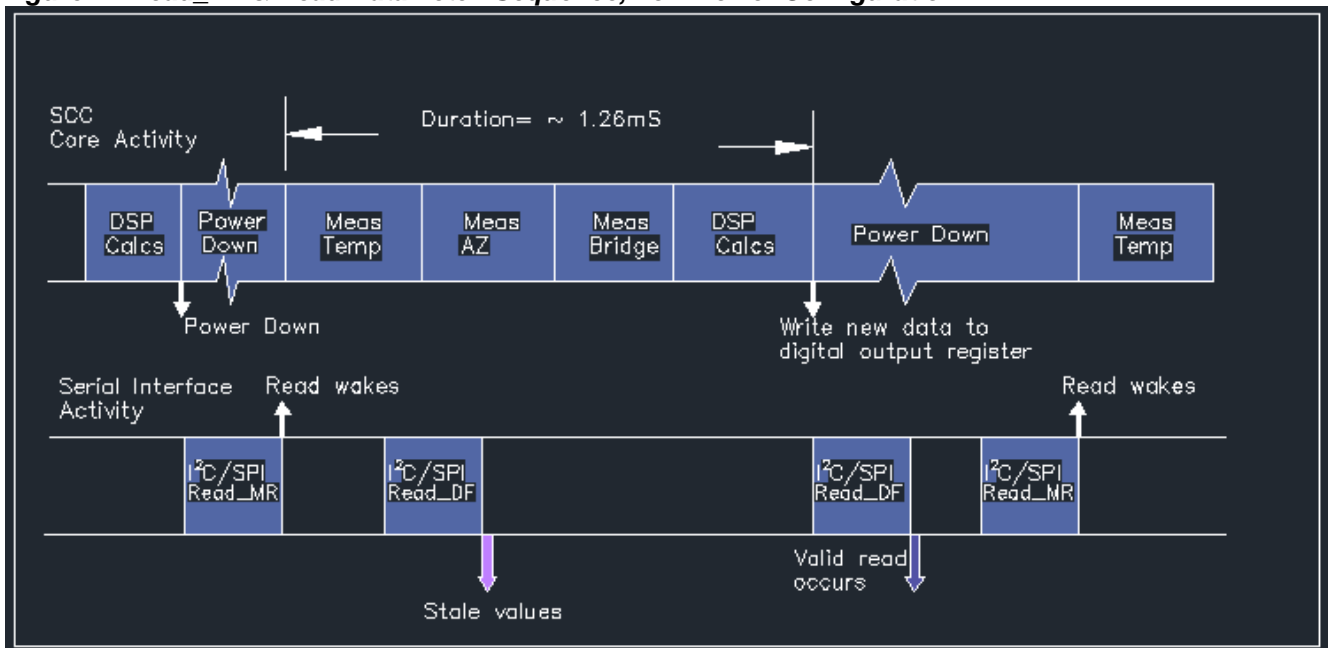
## Configuration, POR and Power Consumption

**Figure 3. Flow Diagram of Low Power Configuration**



If the command is Read\_MR, temperature, auto-zero (AZ), and bridge measurement are implemented followed by the DSP correction calculations. Figure 3 above, depicts the general flow of the low power option, while Figure 4 below shows the Measurement Request (MR) fetch actions, relevant bus activity and status bits results.

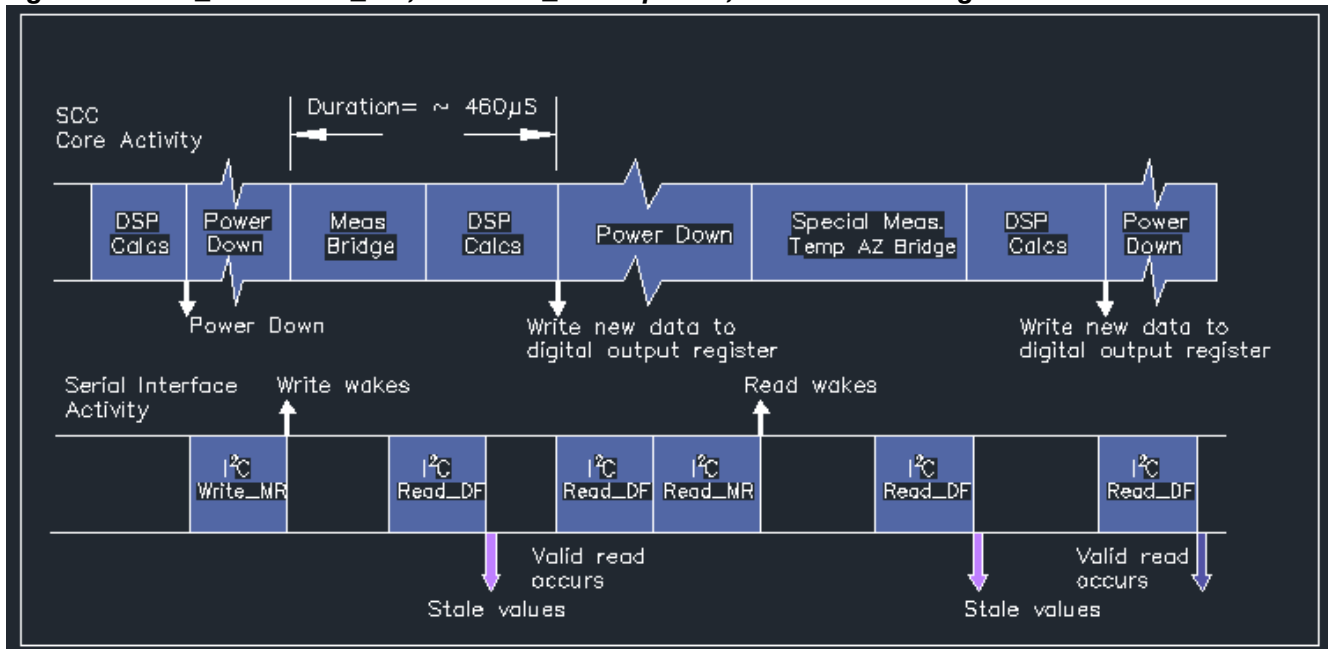
**Figure 4. Read\_MR& Read Data Fetch Sequence, Low Power Configuration**



If the command is Write\_MR, only the bridge measurement is performed with correction calculations used from previously measured temperature and auto-zero data. Valid values are then written to the digital output register and the SCC powers down again. (Figure 5)

## Configuration, POR and Power Consumption

Figure 5. Write\_MR & Read\_MR, and Read\_DF Sequence, Low Power Configuration



Following a measurement sequence and before the next measurement can be performed, the master must send a Read\_DF command, which will fetch the data as 2, 3 or 4 bytes without waking the SCC. When a Read\_DF is performed, the data packet returned will be the last measurement made with the status bits set to "valid." After the Read\_DF is completed, the status bits will be set to "stale." The next Read\_MR or Write\_MR will wake the part again and start a new measurement cycle. If a Read\_DF is sent while the measurement cycle is still in progress, then the status bits of the packet will read as "stale." The chip should be polled at a frequency slower than 20% more than the update time. (Read MR=  $1.26 \times 1.20 = 1.512\text{mS}$  661Hz OR Write MR=  $0.460 \times 1.2 = .552\text{mS}$  1.811kHz)

## Configuration, POR and Power Consumption

### POWER ON RESET

#### Power On Reset (POR) and Start Time to Data Ready, Standard Configuration

Upon a POR, the SCC will go immediately into its configured programmed digital protocol output mode and start performing temperature and pressure A2D conversions. The time required for data to appear on the output bus is given by the “Start Time to Data Ready” product specification.

#### Power On Reset (POR), Low Power Configuration

Data is considered invalid from system power-on reset (POR) until the first measured data is written to the digital register. Sending an I<sup>2</sup>C Write\_MR as the first command after power-on delivers invalid data; even though the status bits report it as “valid”. This is due to the correction calculations being performed with an uninitialized temperature and Auto-Zero value. To obtain valid data with valid status bit, perform I<sup>2</sup>C Read\_MR so that temperature measurements and valid DSP corrections are made.

### POWER CONSUMPTION, -L OPTION

#### Power Consumption

Power consumption is a function of sampling rate and the type of MR command. During the measurements periods described in Figures 4 & 5, power is applied to the sensor with typical power consumption of 2-3mA. After conversion, the SSC sleeps and consumes typically 0.6uA at room temperatures. As temperature increases, the sleep values will increase ~5x at 85°C and ~10x at 125°C. In Table 1, the typical room temperature current consumptions are indicated.

**Table 1. Current Consumption by Sampling Rate (25°C)**

Command	Sampling Rate			
	10 Hz	100Hz	500Hz	1000Hz
Write_MR	0.0135 mA	0.135 mA	0.675 mA	1.35 mA
Read_MR	0.045 mA	0.45 mA	2.25 mA	--

#### NORTH AMERICA

Measurement Specialties  
45738 Northport Loop West  
Fremont, CA 94538  
Tel: 1-800-767-1888  
Fax: 1-510-498-1578  
Sales: [pfg.cs.amer@meas-spec.com](mailto:pfg.cs.amer@meas-spec.com)

#### EUROPE

Measurement Specialties  
(Europe), Ltd.  
26 Rue des Dames  
78340 Les Clayes-sous-Bois, France  
Tel: +33 (0) 130 79 33 00  
Fax: +33 (0) 134 81 03 59  
Sales: [pfg.cs.emea@meas-spec.com](mailto:pfg.cs.emea@meas-spec.com)

#### ASIA

Measurement Specialties  
(China), Ltd.  
No. 26 Langshan Road  
Shenzhen High-Tech Park (North)  
Nanshan District, Shenzhen 518057  
China  
Tel: +86 755 3330 5088  
Fax: +86 755 3330 5099  
Sales: [pfg.cs.asia@meas-spec.com](mailto:pfg.cs.asia@meas-spec.com)

The information in this sheet has been carefully reviewed and is believed to be accurate; however, no responsibility is assumed for inaccuracies. Furthermore, this information does not convey to the purchaser of such devices any license under the patent rights to the manufacturer. Measurement Specialties, Inc. reserves the right to make changes without further notice to any product herein. Measurement Specialties, Inc. makes no warranty, representation or guarantee regarding the suitability of its product for any particular purpose, nor does Measurement Specialties, Inc. assume any liability arising out of the application or use of any product or circuit and specifically disclaims any and all liability, including without limitation consequential or incidental damages. Typical parameters can and do vary in different applications. All operating parameters must be validated for each customer application by customer's technical experts. Measurement Specialties, Inc. does not convey any license under its patent rights nor the rights of others.